



NHCC REOPENING GUIDELINE & INFORMATION

DATE ISSUED: 9/7/2020

NHCC COVID-19 Update

As of July 1st, all of Northern Virginia are now in Phase 3 of reopening. As things continue, we want to provide you with the following updates.

You may have noticed a small team of people going to church every Sunday mornings since the pandemic started. Our EM team consists of James, Micah, Peter, Shinah, Sister Eunah, Pastor David, and Pastor Soo. Beginning **Sunday, August 2nd (10-11am)**, our team plans to slowly expand this number to a total gathering of 20 people. If you are interested in joining us for these smaller services, please check out the **google sign-up sheet** for more information. Registration will be required, and capacity will be limited, so make sure you RSVP your seat! If there is an upward trend of more than 20 people signing up per week, we will open **a second Sunday service at 11am** to accommodate our congregation size with the same safety guidelines.

The following are requirements for those of you who would like to gather together in person. Although we literally cannot wait to see everyone, we understand that these gatherings are not without risk. As we slowly reopen, please pray for wisdom and discernment in reopening the right way for you, your families, and our staff. There is no shame, obligation, or pressure to return to in-person service if you or your family are not ready to do so. We will continue to provide online streaming options for our members throughout!

Our in-person services will start **Sunday, August 2nd (10 - 11am)** all will be conducted according to the following requirements using guidelines from the local, state, and national officials (CDC, VA Dept of Health, and VA Governor's Guidelines).

Mandatory Requirements

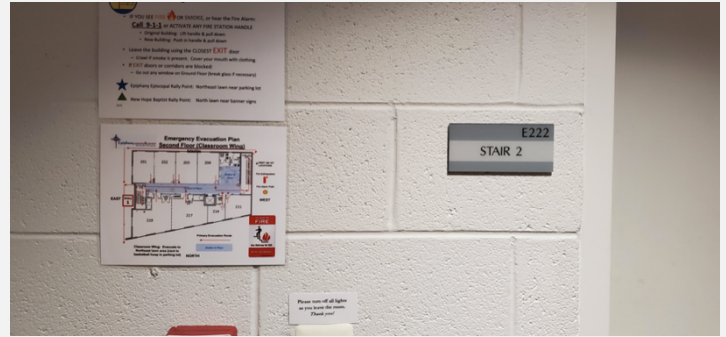
Our in-person services must strictly adhere to the following requirements:

- Occupancy will be no more than **20 people** in our service (RSVP is needed to attend the in-person service).
- Chairs will be seated 6ft apart (front, back, side to side) at all times and members must practice social distancing throughout (family members may be seated together). See attachment below.
- Persons attending service must wear a face covering at all times (masks will as be provided).
- Offering basket will not be passed amongst members, and at this time we will be taking offering electronically only.
- Cleaning and disinfection of frequent contact surfaces (door knobs, chairs, equipment, hand railings, elevator buttons, etc.) will be conducted before AND after every service.
- **Entry/Exits will be marked.** We ask members to enter in the designated "enter" door and exit from the designated "exit" door to prevent awkward "clumping". Please feel free to use the staircase exit when exiting the building. See attachment below.
- **Temperatures will be taken at the door** and members must be less than 100.4 Degrees.
- Upstairs and downstairs bathroom occupancy will be at max 2 members at a time. Please wash your hands with soap.
- **Hand sanitizing stations and masks** will be provided throughout the building (in entrance #2 and upstairs room 217 & 219).
- Worship leader and pastors will be conducting service behind a clear glass shield. There will be **no congregational singing**.
- There will be no fellowship after service and no shared meals provided to discourage communal touching of foods.
- RSVP weekly. Sign-up sheets (20 slots per week) are required for those wanted to attend in-person service. This will allow us to safely monitor space and best service our congregation.
- **Those who have a fever, symptoms of COVID-19, known exposure to a COVID-19 case (within 14 days of contact), or have been traveling (within the past 14 days) are asked to please stay at home and will not be permitted into the building.**
- For the time being, we ask that parents of **young children, those with preconditions, and elderly** please keep safe at home and have alternative worship attendance as needed.



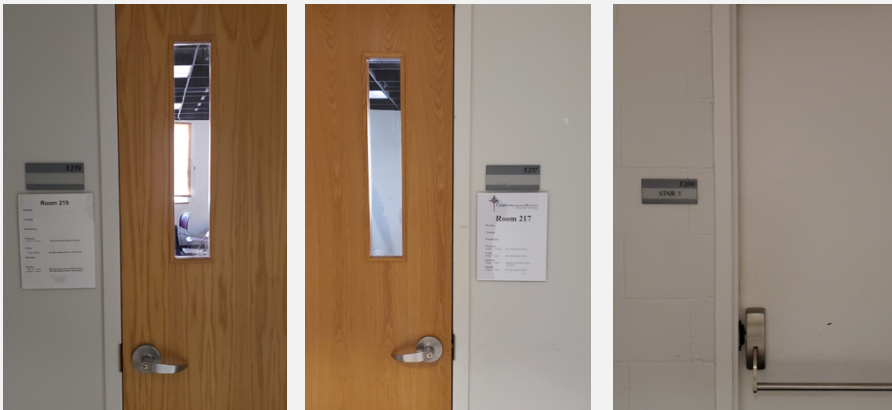
Exit and Entry Strategy

Entry/Exits will be marked. We ask members to enter in the designated “enter” door and exit from the designated “exit” door to prevent awkward “clumping”. Please feel free to use the staircase exit or Epiphany main entrance when exiting the building. See attachment below. **Temperatures will be taken at the main door** and members must be less than 100.4 degrees to enter. Hand sanitizing stations and masks will be provided throughout the building (particularly at the Epiphany main entrance and our worship room entrance points).



ENTRANCE MAIN LEVEL:

1. Enter through the side door #2. There will be an usher to take your temperature, sanitize your hands, and provide a mask if needed. Anyone with a fever above 100.4 degrees (considered by CDC) will not be permitted into the building.
2. Proceed upstairs through “Stairs 2” (end of the hallway, passed the elevator).



SECOND LEVEL:

3. Enter worship room through door #219
4. Exit worship room through door #217
5. Exit the second floor through “stairs 1”

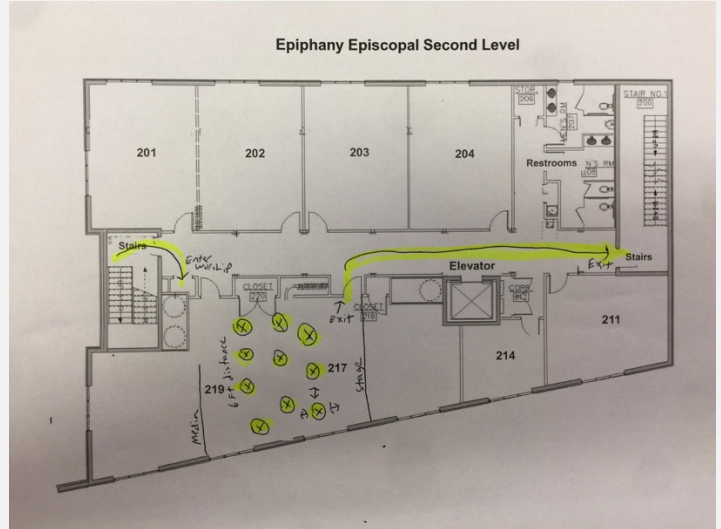
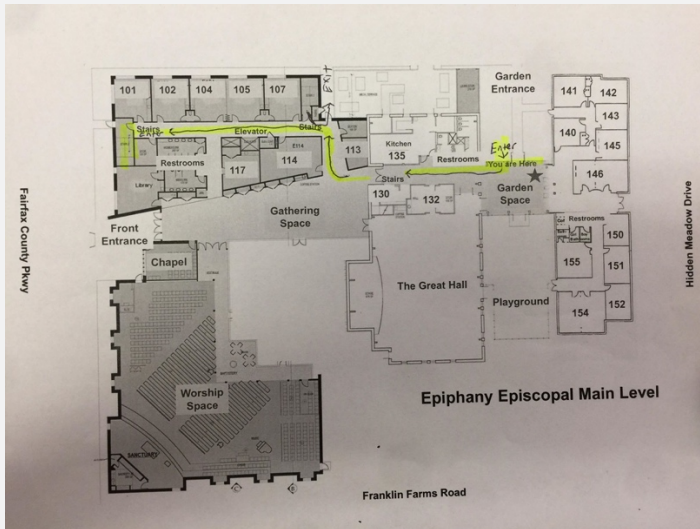


EXIT MAIN LEVEL:

6. Exit the building through the door next to the electrical room.

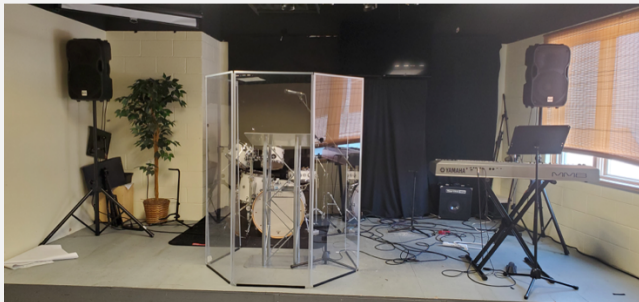


Main & Second Floor Building Plan



Room Arrangement Chart

Chairs will be **seated 6ft apart** (front, back, side to side) at all times and members must practice social distancing throughout (family members may be seated together). Occupancy will be no more than **20 people** in our service (RSVP is needed to attend the in-person service). Worship leader and pastors will be conducting service behind a clear glass shield. There will be **no congregational singing**.



Crisis Management Plan

Given the public health implications of the 2020 global pandemic, New Hope Community Church will respond and adjust in response to this crisis accordingly. Our **in-person service emergency plan** will come into place in the following cases (a) if a COVID-19 positive person was present in the room and/or (b) a person was present in the room and has previously (within 14 days) come in contact with a COVID-19 positive person.